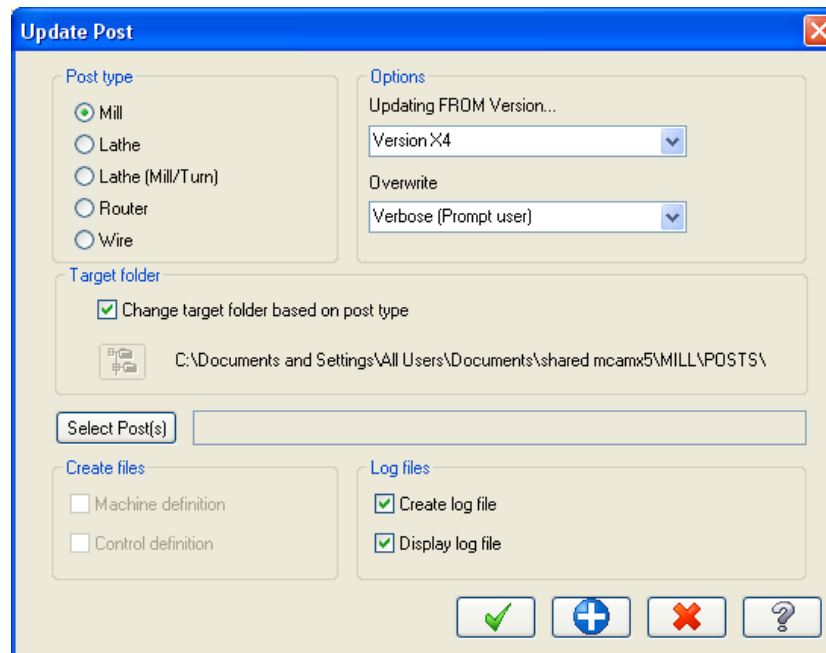


X5 Post Update Notes (Windows 7)

Updating pst and psb files for X5

It does not appear that there are any common post fixes for X5 if updating posts from X4. Post updates directly from versions prior to X4 can be attempted, but issues may arise. If there are any changes in post functionality, please contact In-House Solutions Inc. for further assistance.

1. Run the UpdatePost.dll Chook.
2. Select the post type.
 - Some posts for Mastercam Router are actually "Mill" post type. If a message is displayed indicating you have selected the wrong post type, cancel the update and change the post type to Mill.
 - When updating any posts for Mastercam Lathe, select Lathe(Mill/Turn).
3. Set the version of Mastercam you are updating the post from.
4. The target folder should be set to the correct location by default. If it is not, uncheck 'Change target folder based on post type' and set the target location.
5. Click 'Select Post' and select the pst file from the previous version to be updated to X5. The psb file will be updated automatically.
6. Select 'Create Log File' and 'Display Log File'.
7. Click the checkmark.
8. If errors are encountered, attempt to resolve the errors based on the error messages. Otherwise, save the log file and send it to your Mastercam reseller.

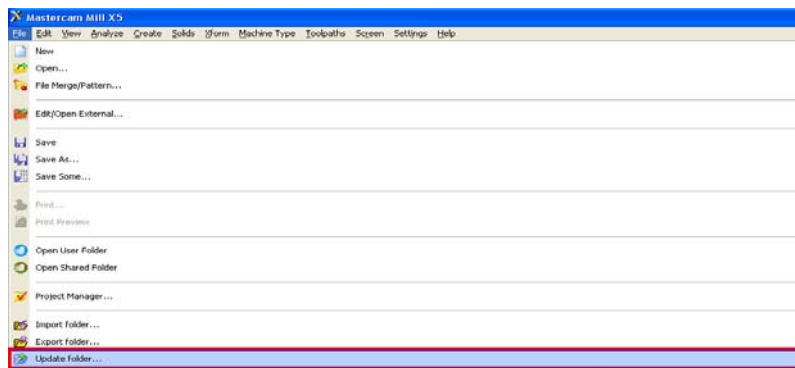


Updating Machine and Control Definitions from Previous Mastercam Versions

Machine Definitions: .mmd, .lmd, .rmd, .wmd,

Control Definitions: .control

1. In the file menu, select 'Update Folder'.

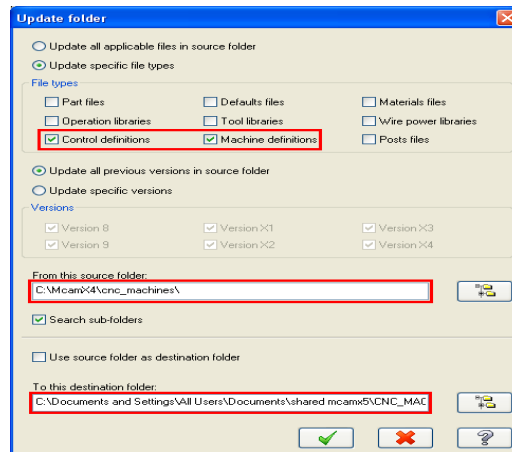


2. In the update folder dialog, apply the settings shown in the image below.
 - a. For typical installs of Mastercam X5, the source folder should be the location of your previous machine and control definitions:

C:\mcamx\CNC_MACHINES

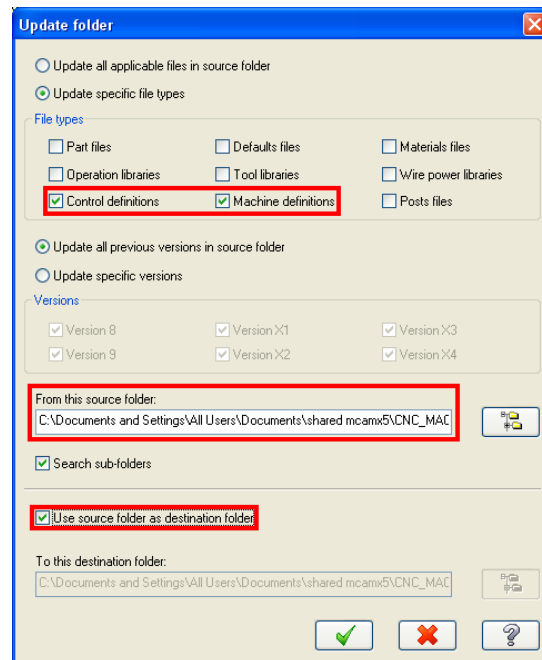
The destination folder must also be set manually to the new location for machine and control definitions:

C:\USERS\PUBLIC\DOCUMENTS\SHARED MCAMX5\CNC_MACHINES\ * @ *



- b. Alternatively, you could place your machine and control definition files in the proper location for X5 prior to updating them and apply the settings shown in the image below. The source folder should be:

C:\USERS\PUBLIC\DOCUMENTS\SHARED MCAMX5\CNC_MACHINES\ *@*



3. Remove the original machine and control definitions from the target folder and keep them as backup.

Where are the NC files?

For a standard Mastercam X5 install, posted NC files can be found in the following folder:

`C:\Users\<user>\Documents\my mcamx5\<Product>\NC` *@*

<Product> refers to the Mastercam environment you are using.

- Mill, Lathe, Router or Wire

Where to put posts and machine and control definition files (.mmd, .lmd, .rmd, .wmd, .control)?

For a standard Mastercam X5 install, machine and control definition files should be put into the folder:

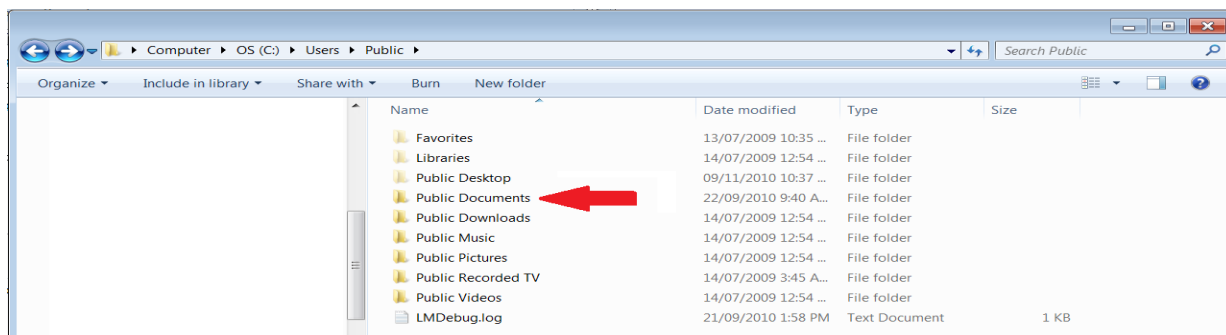
`C:\USERS\PUBLIC\DOCUMENTS\SHARED MCAMX5\CNC_MACHINES\` *@*

Posts should be put in the following location:

`C:\Users\Public\Documents\shared mcamx5\<Product>\Posts` *@*

@ A Note on Win7 File Paths

When you go looking for that \Documents folder in \Public you see this :



Notice that there's no \Documents folder here but there is a \Public Documents folder. THEY ARE THE SAME. For some reason, Windows shows \Public Documents but when you click on the file path above you get :

`C:\Users\Public\Documents\`