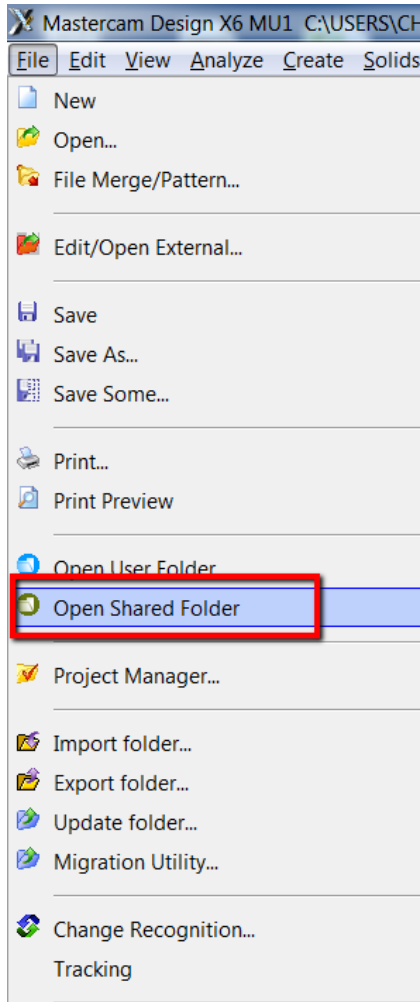


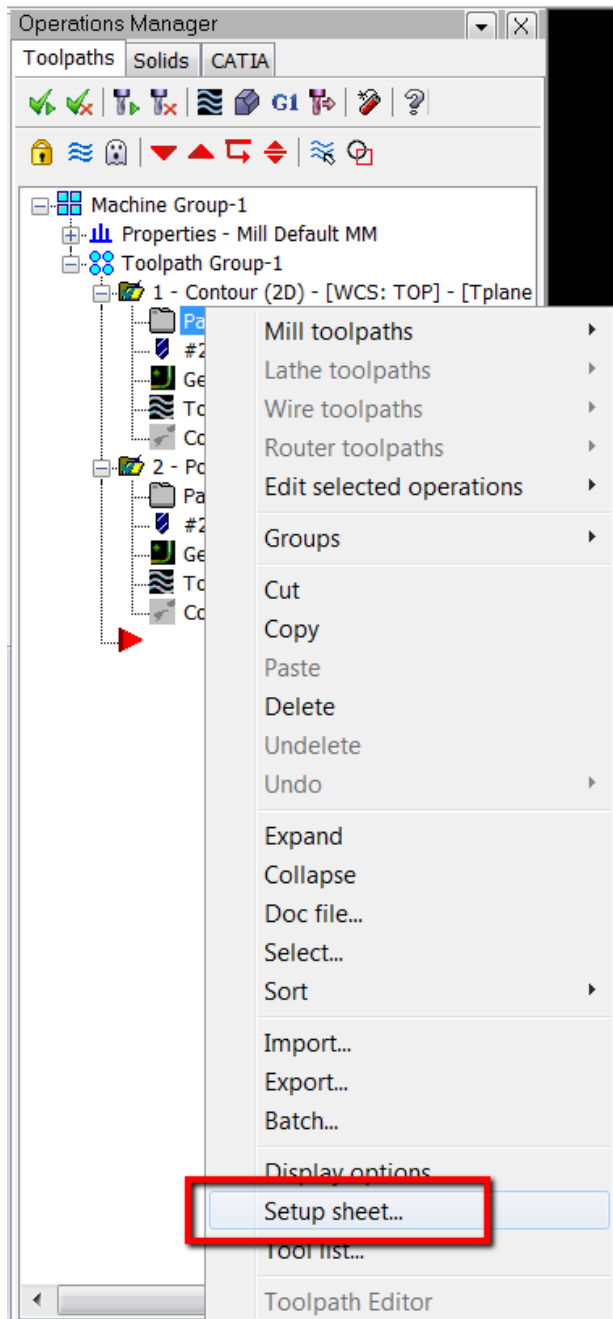
Active Report Install and Setup Instructions for X5 and X6

1. Save your Setup Sheet from your email to an appropriate place such as your desktop.
2. Extract the files from the folder.
3. Start Mastercam
4. Go to File, Open Shared Folder

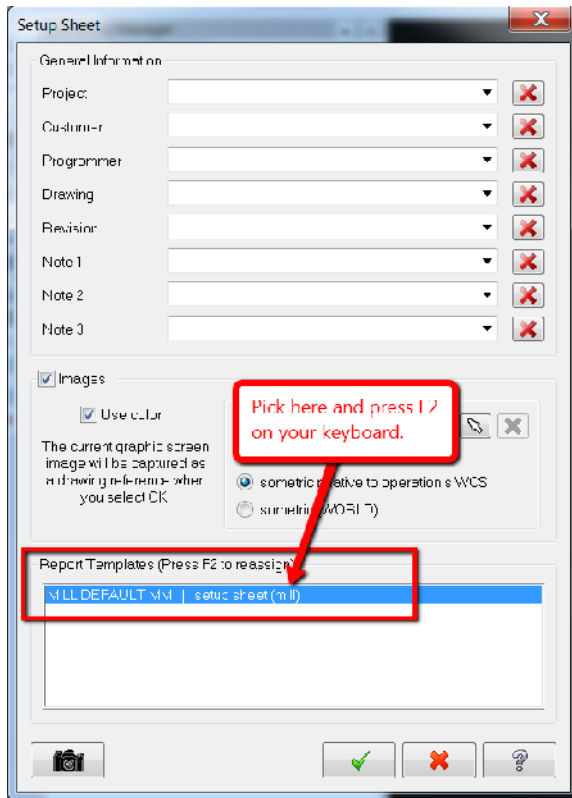


5. Go to the following folder location: C:\Users\Public\Documents\shared mcamx6\common\reports\SST
6. Copy and paste the .rpx files into the appropriate folder location being C:\Users\Public\Documents\shared mcamx6\common\reports\SST

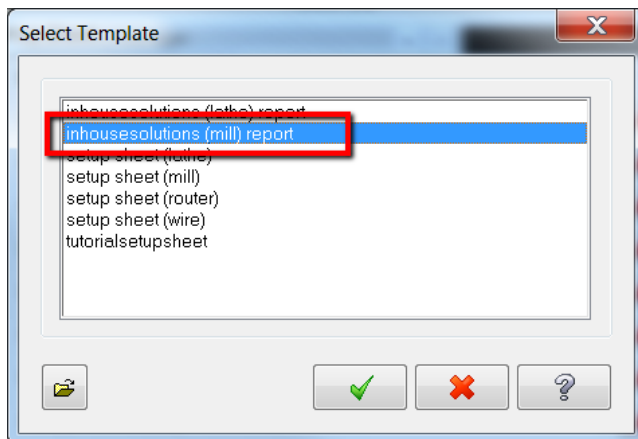
7. Now go back into Mastercam and open a file you wish to make a setup sheet from.
8. Select the toolpaths in the Operations manager and right click on the toolpaths and choose "Setup Sheet".



9. Select the Report Template and choose F2 to pick the Inhousesolutions (___) report.



10. Choose the Inhousesolutions (___) report and press the Okay button twice.



At this point a setup sheet should be generated.